

## **TECHNICAL BULLETIN 06**

**DATE:** 30 June 2022

**PRODUCTS:**

- Fathom-X Tether Interface Board (FATHOM-X-SINGLE-R1-RP)
- Fathom-X Tether Interface Board Set (FATHOM-X-PAIR-R1-RP)
- Fathom-X Tether Interface FXTI (FXTI-ASM-R1-RP)
- BlueROV2 Electronics Enclosures both Acrylic and Aluminum (BROV2-ASM-P-ELEC-ENCLOSURE-R3-RP, BROV2-ASM-M-ELEC-ENCLOSURE-R3-RP)
- BlueROV2 Kits both Acrylic and Aluminum Tube Configurations (BLUEROV2-P-R4-RP, BLUEROV2-M-R4-RP)

**SUBJECT:** Fathom-X PCBA populated with incorrect TVS diode

**SUMMARY:** At the end of June, connection issues were discovered and isolated down to the Fathom-X board. Due to a component sourcing mistake, some PCBAs were populated with an incorrect TVS diode. This severely reduces communication bandwidth and it affects the video streaming to unusable levels.

Orders of the above products that were shipped between May and June 2022 may be affected, but it is unclear when this issue was introduced to our stock. All stock has been subsequently pulled from shelves for inspection by our quality assurance and engineering team. All orders shipped after June 28<sup>th</sup>, 2022 have been inspected and are correct.

**IDENTIFICATION:** Blue Robotics recommends visually inspecting all Fathom-X Tether Interface Boards from orders shipped between May-June 2022 for incorrect diode component. Figure 1 shows the affected component TVS diode located between the connector corner and transformer. The correct diode is labeled “5C” and the incorrect diode is labeled “05” as shown in Figure 2.

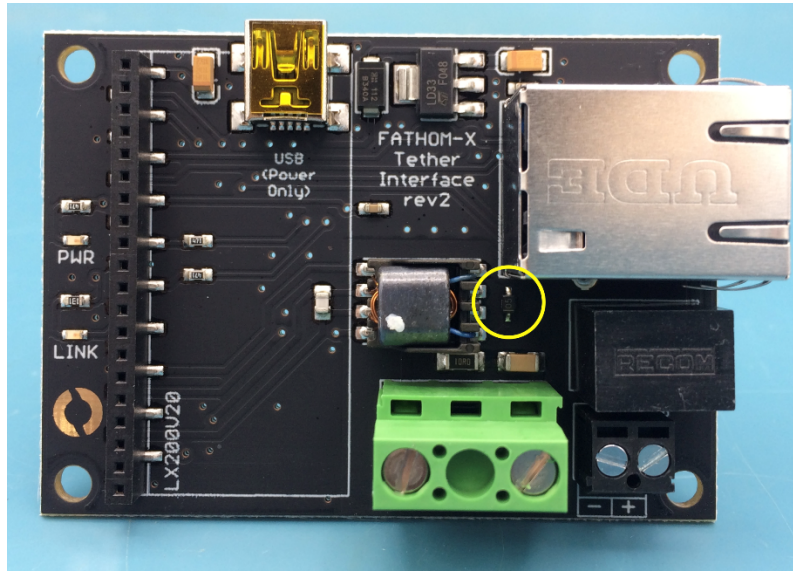


Figure 1. Location of affected TVS diode

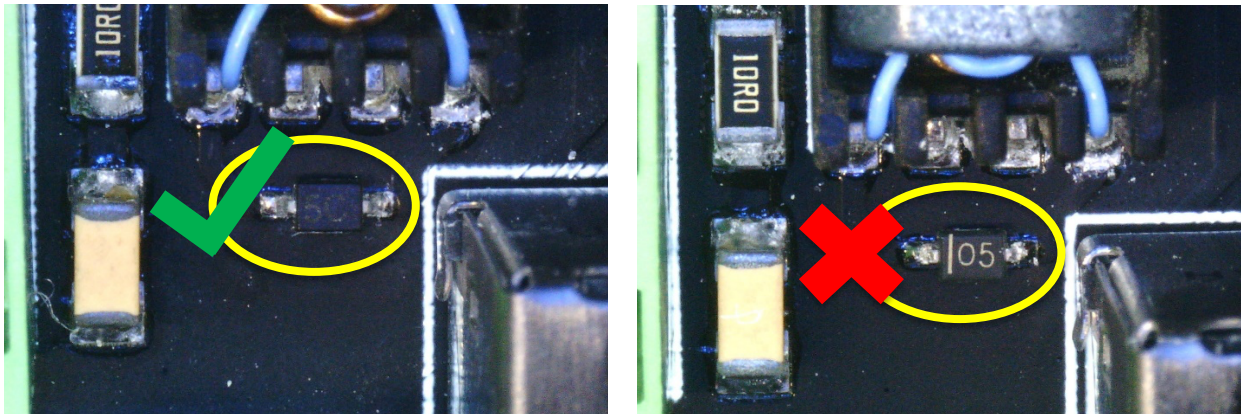


Figure 2. On the left is the correct component "5C" and on the right is the incorrect component.

**CUSTOMER ACTION:** If you have any affected Fathom-X Tether boards or related products, please contact our support team at [support@bluerobotics.com](mailto:support@bluerobotics.com) with all available order information to receive replacement boards.

**BLUE ROBOTICS ACTION:** Current stock is inspected and sorted. Boards with the incorrect diode will be corrected.